



Water Quality Worksheet

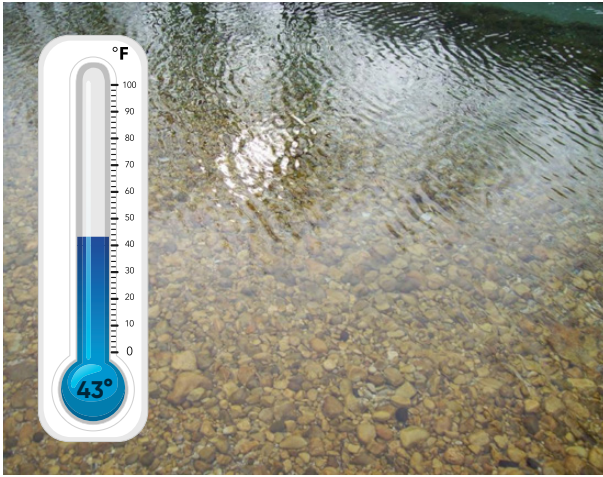
Stream Source Sample

Parameter	Level/Concentration
Temperature	
Dissolved Oxygen	
Turbidity	
Nitrates	
Litter	
Biodiversity	

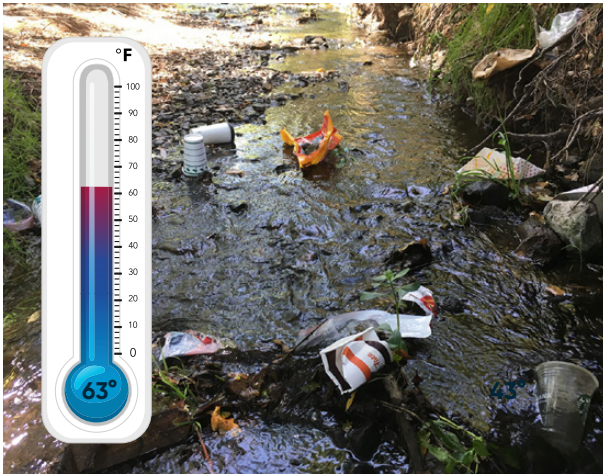
Mouth of Stream Sample

Parameter	Level/Concentration
Temperature	
Dissolved Oxygen	
Turbidity	
Nitrates	
Litter	
Biodiversity	

Sample #1: Source of Stream



Sample #2: Mouth of Stream





Answer Key

Sample #1: Source of Stream

- Cold Water
- High
- Dissolved Oxygen
- Low turbidity (small amount of sediment/dirt)
- Low nitrates (little to no fertilizer or poop)
- No trash
- High diversity of aquatic life

Sample #2: Mouth of Stream

- Warm water
- Low dissolved oxygen
- High turbidity (lots of sediment/dirt)
- High nitrates (fertilizer, poop)
- Trash (Styrofoam cup, plastic wrapper)
- Low diversity of aquatic life